

Patterns of membership

including the 2025 tabular statement

Compiled for Yearly Meeting,
Friends House, London and online
1–4 May 2026

Yearly Meeting of Quakers in Britain



Proceedings

A number of documents will help us meet with hearts and minds prepared. Collectively, these are the '*Proceedings of the Yearly Meeting of the Religious Society of Friends (Quakers) in Britain 2025*'.

The full set comprises:

1. *Preparing for Yearly Meeting*, including community guidelines.
2. *Agenda and notes*, with introductory material for Yearly Meeting and annual reports of Meeting for Sufferings and other related bodies
3. *Testimonies*, including index of epistles
4. *Trustees' annual report*, including financial statements for the year ended December 2025 (this will be published later in the year)
5. *Patterns of membership*, including the 2025 tabular statement
6. *Minutes*, which are distributed after the conclusion of Yearly Meeting.

All documents will be available online at www.quaker.org.uk/ym. Many Friends will read the documents online, but if you need printed documents, they will be in a printer-friendly PDF format. We ask Friends to print their own copies or to seek assistance from someone in their meeting. This will help us to save costs and reduce the environmental impact of Yearly Meeting.

If you require accessible documents, please request these when booking for Yearly Meeting. If these do not meet your accessibility needs, or the needs of someone you know, please email ym@quaker.org.uk.

All *Quaker faith & practice* references are to the fifth edition, which can be found online at www.quaker.org.uk/qfp.

You can read about Yearly Meeting in chapter 6 of *Quaker faith & practice*. Alternatively, contact Yearly Meeting Arrangements Committee on 020 7663 1040 or at ym@quaker.org.uk or go to www.quaker.org.uk/ym.

Membership patterns in Britain

Yearly Meeting

The tabular statement of membership has been published annually since 1861. It informs the yearly meeting of the number of Friends in membership, based on information provided by area meetings (see *Quaker faith & practice* 4.10h).

This document contains information down to area meeting level. Additional data, including local meeting data, will be available online at www.quaker.org.uk/ym.

Membership

Membership of the yearly meeting at the end of 2025 was 10,539 (10,764 in 2024), a decrease of 225. During the year 217 Friends came into membership. The membership of 191 adults was terminated and area meetings recorded 329 deaths.

Attendees

The number of recorded attendees was 7,684 (7,173 in 2024), a rise of 511, and there were 952 children not in membership (817 in 2024).

Marriages

There were 25 marriages in 2025 (34 in 2024). Looking at the Membership of those getting married, no marriages were between two members; 14 were between a member and a non-member and eleven were between non-members. People getting married are asked to provide their gender. Of the 50 people who were married, 27 described themselves as female and 23 as male. There were 21 weddings of mixed-gender couples and four of same-gender couples: three where both were female and one where both were male.

The statistical tables

Quakers in regions and general meetings of Britain

Table 1 provides a summary of incomings and outgoings for Britain Yearly Meeting as a whole. Membership fell by 2.10% over the year. New memberships decreased by 23 compared to 2024.

Table 2 provides membership statistics for the yearly meeting since 1935.

Table 3 provides a regional summary of the number of members and attendees as well as an indication of the proportion who are children, attendees and women. 57% of members and attendees are women and 42% of all adults are attendees. The gender category of 'other' (introduced in 2015) has been used by a few area meetings. Meetings may wish to make members and attendees aware of the opportunity to be recorded this way.

Table 4 summarises trends in membership over the last ten years. Convincements over 10 years represent 2,260 Friends or 21.44% of total membership. Terminations over the same period were 1,729 and deaths were 3,104. This resulted in a decline in membership of 2,837 with notified changes from 2015. The total number of members and attendees increased from 17,937 to 18,223 in the year.

Area meetings

Table 5 provides information on members, attendees and children for each area meeting, as well as information on those joining and leaving over the last ten years.

Table 6 looks at trends at area meeting level over ten years. Over this time the membership of four area meetings grew.

Local meetings

There were 430 local meetings (LMs) at the end of 2025 and 25 worshipping groups under the care of a local meeting. Six local meetings informed us of closure. A significant number of Quakers continue to gather online, in local and area meeting groups as well as participating in national and international worship. Many meetings meet in a blended way, combining online participation with in-person attendance.

Table 1. Quakers coming into membership and ceasing to be members of Britain Yearly Meeting in 2025

Incomings	2024	2025	Outgoings	2024	2025
By application			By termination of membership		
Adults	240	217	initiative of member	93	83
Children	0	0	initiative of area meeting	79	108
Subtotal	240	217	termination of children's membership	0	0
			Subtotal	172	191
			By death	342	329
By certificate			By certificate		
from Britain Yearly Meeting	128	88	to Britain Yearly Meeting	149	86
from another yearly meeting	2	5	to another yearly meeting	11	5
Subtotal	130	93	Subtotal	160	91
Total notified incomings to AMs	370	308	Total notified outgoings from area meetings	674	611
	2024	2025		2024	2025
Members living abroad	110	120	Total number of members at start of year	11,118	10,764
Sojourning members	31	25	Recorded +/- in membership	-354	-225
			Balance of notified discrepancies	-69	-4
Number of area meetings	70	70	Number of members at end of year	10,764	10,539
Number of local meetings	440	430	As a % of membership loss/gain	-3.18%	-2.10%

Figure 1a. Membership in/out changes (2000-2025)
Convincements, terminations, deaths

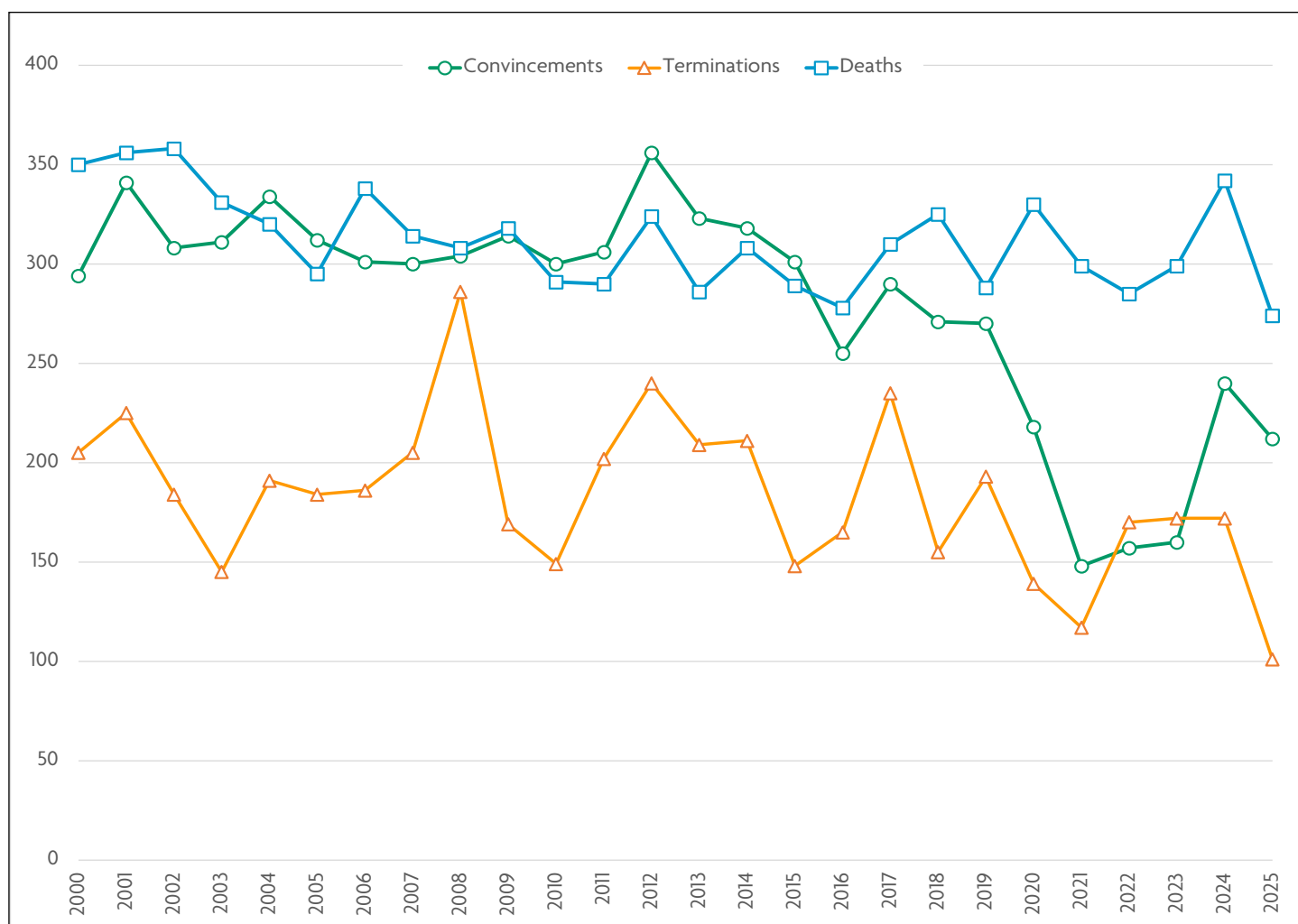
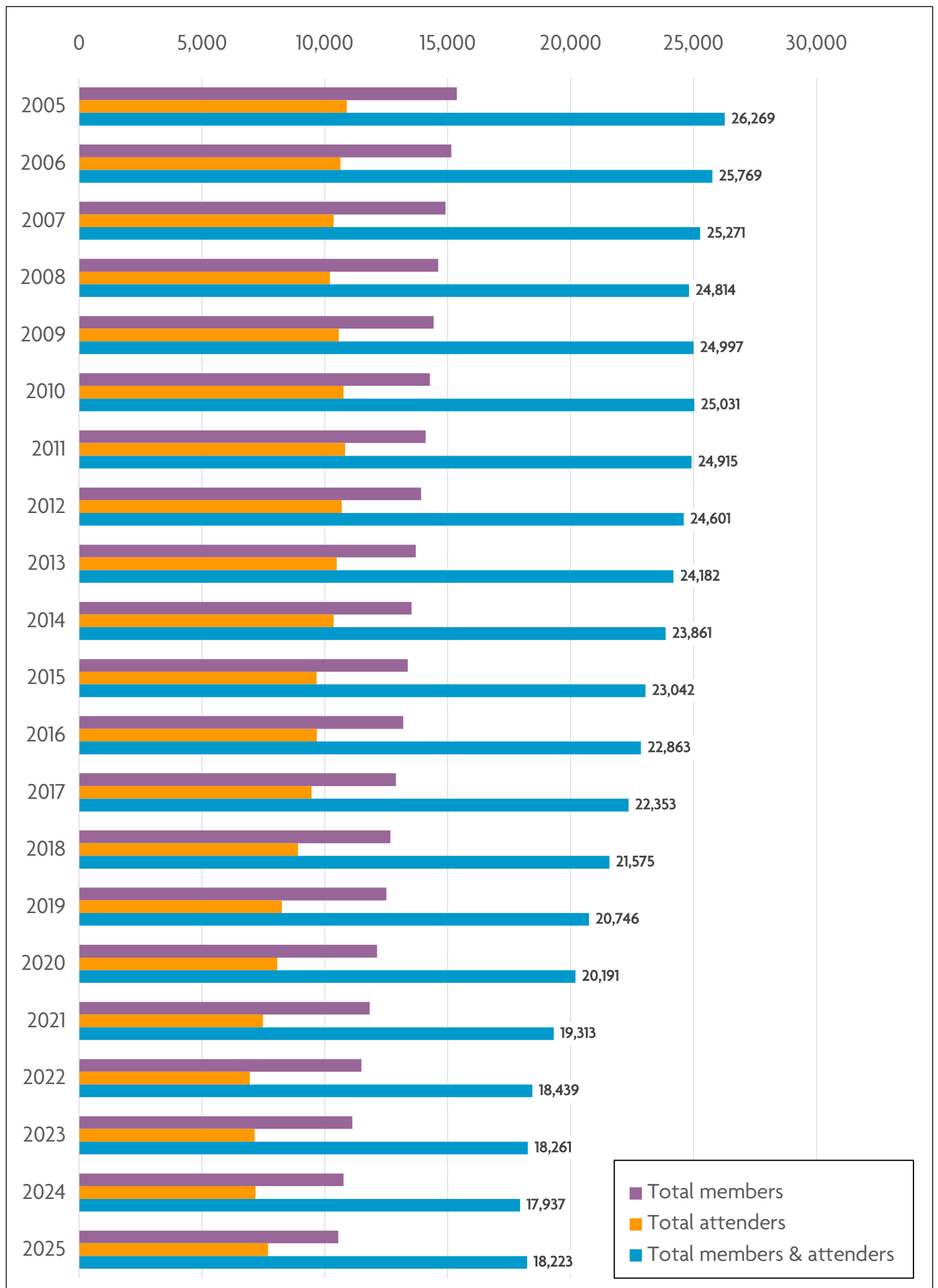


Figure 1b. Members and attenders by year



About the tabular statement

Since 2013, changes have been made to the tabular statement to help make the data more informative and to highlight important patterns and trends. All data is collected from area meetings but at local meeting level. Historical data from the last 20 years is being used to provide more information on trends.

Following requests from individuals and area meetings, Meeting for Sufferings asked the Recording Clerk to consider how best to provide information on gender. As a result, an additional category of 'other' has been included (see Terminology below). Some meetings have chosen to use 'other' to remove gender reporting in their meetings.

Terminology

Attender: one who, not being a member, frequently attends a specific meeting for worship (*Qf&P* 11.38). Refers to an adult attender; children not in membership are identified separately.

Child: someone under 16 years old.

Member: one who is in membership of the Society. Unless stated differently, figures include children in membership.

Other: adults who have indicated a gender identity other than man or woman. This might include people who have stated they are agender, neutrois or who have a(n)other non-binary gender identity.

Sojourning member: a member of another yearly meeting, recognised as sojourning their membership within an area meeting in Britain (*Qf&P* 11.27). Identified separately, they are not included in the membership figures.

Boundary changes

In 2015, North Cumbria AM and West Cumbria AM combined to form Cumberland AM. Where two area meetings combine to form a single one, figures provided for all years combine the data for the constituent meetings. Where area meetings have separated into more than one, membership information is based on the actual numbers for each of the constituent local meetings. Up to 2014, figures for flows (convincements, terminations, transfers and deaths) were only collected at area meeting level. Estimates are based on the proportion of the membership forming each new area meeting in the year they were formed. This applies to: North Somerset AM (formed 2011); and West Wiltshire and East Somerset AM (formed 2011). Where a single local meeting moved from one area to another, it has not

been possible to adjust the overall historic figures. Data for that meeting is included with the area meeting of which it is part in any year. This affects Chorley LM which transferred from Lancashire Central & North AM to Pendle Hill AM in 2016 and in 2021, Leigh-on-Sea LM transferred from North East Thames AM into Mid Essex AM.

Year-end figures and corrections

Each area meeting is required to send Tabular Statement information for the year ending 31 December. Meetings are given an opportunity to correct previous year data with subsequent amendments to changes, (including transfers and deaths) which were minuted within the last year but not returned before the year-end deadline.

In the past, revisions were included in the figures for the following year. As this distorts trends, the method adopted since 2014 is to modify membership figures each year to take into account corrections provided the following year. These corrections are indicated in the notified discrepancies row within Table 1.

This document and supplementary tables are also available for download from:
www.quaker.org.uk/ym.

For other formats please contact:

Recording Clerk's Office,
Quakers in Britain
Friends House, 173 Euston Road,
London NW1 2BJ

Statement Coordinator, contact:
Andrew McVicar
E: tabstat@quaker.org.uk

Table 2. BYM membership statistics, 1935 to 2025

Date	Members			Attendees			Members plus attendees			Annual changes			
	Adult members	Child members	Total members	Adult attendees	Children not in membership	Total attendees	Adults	Children	Total-all	Members*	Adult members and attendees	Annual changes: children	Overall total changes
1935	17,251	2,050	19,301										
1940	17,821	2,006	19,827							105			
1945	17,851	2,683	20,534							141			
1950	17,486	3,309	20,795							52			
1955	17,439	3,904	21,343							110			
1960	17,655	3,567	21,222							-24			
1965	18,208	2,854	21,062	5,248	3,899	9,147	23,456	6,753	30,209	-32			
1970	18,832	1,920	20,752	5,796	4,345	10,141	24,628	6,265	30,893	-62	1,172	-488	684
1975	18,865	1,133	19,998	5,830	4,685	10,515	24,695	5,818	30,513	-244	80	-61	19
1980	17,891	658	18,549	5,880	4,278	10,158	23,771	4,936	28,707	-235	-397	-310	-707
1981	17,790	601	18,391	6,243	4,611	10,854	24,033	5,212	29,245	-158	262	276	538
1982	17,741	562	18,303	6,557	4,836	11,393	24,298	5,398	29,696	-88	265	186	451
1983	17,631	500	18,131	6,788	4,655	11,443	24,419	5,155	29,574	-172	121	-243	-122
1984	17,574	471	18,045	7,358	4,956	12,314	24,932	5,427	30,359	-86	513	272	785
1985	17,605	471	18,076	7,732	5,006	12,738	25,337	5,477	30,814	31	405	50	455
1986	17,636	435	18,071	7,936	5,188	13,124	25,572	5,623	31,195	-5	235	146	381
1987	17,692	395	18,087	8,174	5,203	13,377	25,866	5,598	31,464	16	294	-25	269
1988	17,640	370	18,010	8,529	5,089	13,618	26,169	5,459	31,628	-77	303	-139	164
1989	17,709	361	18,070	8,691	5,183	13,874	26,400	5,544	31,944	60	231	85	316
1990	17,765	319	18,084	8,758	5,114	13,872	26,523	5,433	31,956	14	123	-111	12
1991	17,760	312	18,072	8,997	5,340	14,337	26,757	5,652	32,409	-12	234	219	453
1992	17,651	283	17,934	8,995	4,886	13,881	26,646	5,169	31,815	-138	-111	-483	-594
1993	17,549	253	17,802	9,207	4,857	14,064	26,756	5,110	31,866	-132	110	-59	51
1994	17,351	228	17,579	8,958	4,898	13,856	26,309	5,126	31,435	-223	-447	16	-431
1995	17,296	222	17,518	8,901	4,629	13,530	26,197	4,851	31,048	-61	-112	-275	-387
1996	17,119	211	17,330	9,054	4,458	13,512	26,173	4,669	30,842	-188	-24	-182	-206
1997	16,998	191	17,189	9,129	4,304	13,433	26,127	4,495	30,622	-141	-46	-174	-220
1998	16,786	192	16,978	9,201	4,108	13,309	25,987	4,300	30,287	-211	-140	-195	-335
1999	16,532	179	16,711	9,038	4,046	13,084	25,570	4,225	29,795	-267	-417	-75	-492
2000	16,312	174	16,486	9,058	3,770	12,828	25,370	3,944	29,314	-225	-200	-281	-481
2001	16,032	169	16,201	8,719	3,635	12,354	24,751	3,804	28,555	-285	-619	-140	-759
2002	15,796	149	15,945	8,412	3,453	11,865	24,208	3,602	27,810	-256	-543	-202	-745
2003	15,615	142	15,757	8,565	3,382	11,947	24,180	3,524	27,704	-188	-28	-78	-106
2004	15,415	133	15,548	8,468	3,017	11,485	23,883	3,050	26,933	-209	-297	-474	-771
2005	15,273	101	15,374	8,127	2,764	10,891	23,404	2,865	26,269	-170	-479	-185	-664
2006	15,065	82	15,147	8,164	2,475	10,639	23,212	2,557	25,769	-248	-192	-308	-500
2007	14,847	63	14,910	8,133	2,228	10,361	22,980	2,291	25,271	-220	-232	-266	-498
2008	14,552	55	14,607	8,017	2,190	10,207	22,569	2,245	24,814	-303	-411	-46	-457
2009	14,371	59	14,430	8,330	2,237	10,567	22,701	2,296	24,997	-177	132	51	183
2010	14,220	55	14,275	8,560	2,196	10,756	22,780	2,251	25,031	-155	79	-45	34
2011	14,048	49	14,097	8,711	2,107	10,818	22,759	2,156	24,915	-178	-21	-95	-116
2012	13,873	43	13,916	8,681	2,004	10,685	22,554	2,047	24,601	-181	-205	-109	-314
2013	13,656	47	13,703	8,495	1,984	10,479	22,151	2,031	24,182	-213	-403	-16	-419
2014	13,483	44	13,527	8,409	1,947	10,356	21,871	1,990	23,861	-176	-280	-41	-321
2015	13,335	41	13,376	7,983	1,683	9,666	21,318	1,724	23,042	-151	-553	-266	-819
2016	13,146	42	13,188	8,131	1,544	9,675	21,277	1,586	22,863	-188	-41	-138	-179
2017	12,884	48	12,892	7,955	1,506	9,461	20,799	1,554	22,353	-296	-478	-32	-510
2018	12,624	42	12,666	7,433	1,476	8,909	20,057	1,518	21,575	-226	-742	-36	-778
2019	12,386	112	12,498	6,965	1,283	8,248	19,351	1,395	20,746	-168	-706	-123	-829
2020	12,032	93	12,125	6,902	1,164	8,066	18,934	1,257	20,191	-373	-417	-138	-555
2021	11,737	91	11,828	6,479	1,006	7,485	18,226	1,098	19,313	-297	-708	-159	-878
2022	11,460	31	11,491	6,049	899	6,948	17,509	930	18,439	-337	-717	-168	-874
2023	11,088	30	11,118	6,220	923	7,143	17,308	953	18,261	-373	-201	23	-178
2024	10,722	42	10,764	6,356	817	7,173	17,078	859	17,937	-354	-230	-94	-324
2025	10,516	23	10,539	6,732	952	7,684	17,248	975	18,223	-225	170	116	286

* Membership change figures for 1940 to 1960 are annual averages for each five-year period.
 Membership figures from 2000 are adjusted to include subsequent corrections provided by area meetings.

Table 3. Quakers in regions and general meetings of Britain, 2025: summary

Region	Number of members at end 2025					Number of attenders at end 2025							Members plus attenders at end 2025							Percent of total who are children	Percent of adults who are members	Percent of adults who are women
	Men	Women	Other	Unspecified / not disclosed (adults)	Children	Total	Men	Women	Other	Unspecified / not disclosed (adults)	Children	Total adults	Men	Women	Other	Unspecified / not disclosed (adults)	Children	Total adults				
Bedfordshire	183	241	1	122	1	548	132	180	2	86	51	451	315	421	3	208	52	947				
Berks & Oxon	185	342	-	-	-	527	157	222	2	-	45	426	342	564	2	-	45	908				
Bristol & Wessex	316	595	1	-	12	924	223	345	2	-	94	664	539	940	3	-	106	1,482				
Cumberland	50	86	-	-	-	136	32	52	-	-	84	220	82	138	-	-	-	220				
Derbys, Lincs & Notts	116	192	-	-	4	312	71	96	-	8	175	487	187	288	-	-	12	475				
Devon & Cornwall	163	323	-	-	-	486	127	192	-	18	337	823	290	515	-	-	18	805				
Essex & Suffolk	130	251	2	-	-	383	82	115	1	16	214	597	212	366	3	-	16	581				
Hants, SE Dorset & Islands	35	96	-	233	-	364	19	43	-	139	221	585	54	139	-	372	20	565				
Kent	56	103	-	-	-	159	50	62	1	7	120	279	106	165	1	-	7	272				
London	342	605	7	-	1	955	252	342	7	115	716	1,671	594	947	14	-	116	1,555				
N Wales & NW England	226	443	2	-	-	671	222	277	9	88	596	1,267	448	720	11	-	88	1,179				
NE England	127	195	2	-	-	324	86	117	1	13	217	541	213	312	3	-	13	528				
Norfolk, Cambs & Hunts	169	289	1	-	-	459	100	162	2	54	318	777	269	451	3	-	54	723				
Scotland	244	417	5	-	-	666	227	329	15	62	633	1,299	471	746	20	-	62	1,237				
Sussex & Surrey	234	391	-	-	3	628	146	253	-	66	465	1,093	380	644	-	-	69	1,024				
Warwick, Leics & Staffs	104	195	1	404	-	704	69	80	-	232	490	1,134	173	275	1	636	49	1,085				
Western	275	509	4	-	-	788	183	244	18	52	497	1,285	458	753	22	-	52	1,233				
Westmorland	121	208	6	-	-	335	81	145	10	31	267	602	202	353	16	-	31	571				
Yorkshire	421	744	3	-	2	1,170	278	379	33	163	853	2,023	699	1,123	36	-	165	1,858				
REGIONAL TOTALS	3,497	6,225	35	759	23	10,539	2,537	3,635	103	457	952	7,684	6,034	9,860	138	1,216	975	17,248				
WALES TOTALS	133	275	3	-	-	411	117	134	6	-	40	297	250	409	9	-	40	668				
SCOTLAND TOTALS	244	417	5	-	-	666	227	329	15	62	633	1,299	471	746	20	-	62	1,237				
ENGLAND TOTALS	3,120	5,533	27	759	23	9,462	2,193	3,172	82	457	850	6,754	5,313	8,705	109	1,216	873	15,343				

Table 4. Membership changes in regions and general meetings of Britain, 2025: recent trends

Region	Members			Members and attenders		% of adults who are members		Convincements		Deaths		Terminations		Net geographic moves	
	2025	2024	2015	2025	2015	2025	2015	2025	2015	2025	2015	2025	2015	2025	Ten year net 2025-2015
Bedfordshire	548	572	754	999	988	1,201	62.8%	9	12	19	15	7	9	-3	-16
Berks & Oxon	527	533	705	953	922	1,243	56.7%	6	14	10	11	0	6	-1	-3
Bristol & Wessex	924	950	1,162	1,588	1,554	1,796	64.7%	19	28	30	20	21	4	3	57
Cumberland	136	139	159	220	223	257	61.9%	0	3	3	5	0	3	-1	2
Derbys, Lincs & Notts	312	298	457	487	497	620	73.7%	5	7	8	1	0	3	1	1
Devon & Cornwall	486	502	654	823	879	1,046	62.5%	19	17	21	15	7	9	4	40
Essex & Suffolk	383	394	451	597	563	649	69.5%	4	8	13	12	0	12	-1	4
Hants, SE Dorset & Islands	364	383	488	585	573	731	66.8%	1	11	14	11	1	0	2	19
Kent	159	177	237	279	283	383	61.9%	10	6	7	4	18	2	-1	-6
London	955	969	1,348	1,671	1,634	2,141	63.0%	26	45	18	33	10	12	-7	-147
N Wales & NW England	671	708	793	1,267	1,261	1,302	60.9%	12	15	16	22	12	5	4	20
NE England	324	326	416	541	517	601	69.2%	8	6	4	10	0	7	3	28
Norfolk, Cambs & Hunts	459	465	590	777	758	897	65.8%	7	16	9	17	0	8	-1	20
Scotland	666	680	693	1,299	1,294	1,425	48.6%	13	19	14	13	10	15	6	59
Sussex & Surrey	628	621	739	1,093	1,053	1,189	62.2%	15	15	14	17	1	23	6	20
Warwick, Leics & Staffs	704	720	850	1,134	1,136	1,391	61.1%	16	9	27	16	2	3	-2	23
Western	788	816	1,011	1,285	1,322	1,649	61.3%	15	27	7	27	8	17	-5	102
Westmorland	335	341	412	602	586	622	66.2%	7	6	14	6	0	5	4	-14
Yorkshire	1,170	1,170	1,482	2,023	1,894	2,241	66.1%	20	37	26	34	4	8	-2	80
REGIONAL TOTALS	10,539	10,764	13,401	18,223	17,937	21,384	63.4%	212	301	274	289	101	151	0.47	15.21

Table 5. Changes in membership, 2015 to 2025

AM#	AM reference	LMs in 2015	Members 2015	Child attenders 2015	Adult attenders 2015	LMs in 2025	Members 2025	Child attenders 2025	Adult attenders 2025	Total members and attenders at end 2025	Members joining and leaving over ten year period				
											Convincements	Transfers in	Transfers out	Terminations	Deaths
1	Chilterns	7	242	29	114	7	122	5	86	213	13	15	25	44	62
2	Hertford & Hitchin	7	156	18	106	6	124	22	87	233	24	8	14	-4	29
3	Luton & Leighton	10	298	31	176	9	245	17	183	445	47	25	11	42	47
4	Northamptonshire	4	91	9	51	3	57	7	44	108	20	0	14	10	30
	BEDFORDSHIRE	28	787	87	447	25	548	51	400	999	104	48	64	92	168
5	Banbury & Evesham	6	121	13	107	6	88	1	60	149	8	17	20	6	43
6	Mid-Thames	7	230	43	190	8	135	13	142	290	48	27	21	113	34
7	Oxford & Swindon	9	354	28	241	8	304	31	179	514	47	25	31	5	69
	BERKS & OXON	22	705	84	538	22	527	45	381	953	103	69	72	124	146
8	Bristol	7	266	50	154	7	229	46	161	436	77	39	38	23	70
9	Dorset & South Wiltshire	6	196	10	180	6	128	9	126	263	27	28	15	43	62
10	Mid-Somerset	4	262	5	75	4	192	1	64	257	10	30	2	41	38
11	North Somerset	4	116	10	54	3	102	7	41	150	15	20	14	2	4
12	West Somerset	7	141	18	69	6	108	5	73	186	24	21	20	13	33
13	West Wiltshire & East Somerset	6	181	18	102	6	165	26	105	296	50	30	22	4	48
	BRISTOL & WESSEX	34	1162	111	634	32	924	94	570	1588	203	168	111	126	255
14	Cumberland	8	159	9	98	5	136	-	84	220	8	19	17	28	51
	CUMBERLAND	8	159	9	98	5	136	-	84	220	8	19	17	28	51
15	Lincolnshire	7	146	1	49	8	138	8	83	229	53	12	12	10	32
16	Nottinghamshire & Derbyshire	9	311	10	114	8	174	-	84	258	45	18	17	12	50
	DERBYS, LINCS & NOTTS	16	457	11	163	16	312	8	167	487	98	30	29	22	82
17	Cornwall	9	223	34	131	8	156	17	94	267	47	42	17	33	76
18	Devon	13	431	35	261	13	330	1	225	556	84	37	22	53	58
	DEVON & CORNWALL	22	654	69	392	21	486	18	319	823	131	79	39	86	134
19	Ipswich & Diss	7	158	8	81	6	135	1	58	194	27	28	19	20	47
20	Mid-Essex	4	78	9	32	4	88	5	45	138	25	3	8	1	37
21	Southern East Anglia	3	135	12	60	4	92	0	54	146	35	10	14	40	43
22	Thaxted	4	80	0	25	3	68	10	41	119	10	3	-1	-4	20
	ESSEX & SUFFOLK	18	451	29	198	17	383	16	198	597	97	44	40	57	147
23	Bournemouth Coastal	6	181	0	86	6	131	0	62	193	28	15	21	24	48
24	Hampshire & Islands	11	307	32	157	9	233	20	139	392	39	50	25	16	67
	HANTS, SE DORSET & ISLANDS	17	488	32	243	15	364	20	201	585	67	65	46	40	115
25	East Kent	5	130	8	89	4	94	6	68	168	21	18	26	22	22
26	West Kent	5	107	2	57	5	65	1	45	111	22	8	7	11	22
	KENT	10	237	10	146	9	159	7	113	279	43	26	33	33	44
27	Kingston & Wandsworth	5	191	43	109	5	149	11	101	261	45	21	41	37	26
28	London West	7	293	21	226	7	236	14	142	392	60	29	59	17	50
29	North East Thames	7	198	31	68	5	80	21	65	166	38	20	64	50	47
30	North London	5	100	37	70	5	91	16	65	172	37	13	23	2	4
31	North West London	7	213	46	138	5	137	0	127	264	41	13	30	-5	54
32	South East London	5	168	49	128	3	135	46	66	247	32	12	19	7	30
33	South London	5	185	7	54	4	127	7	35	169	30	1	10	36	44
	LONDON	41	1348	234	793	34	955	115	601	1671	283	109	246	144	255
34	East Cheshire	8	169	35	96	8	139	23	97	259	24	17	19	9	45
35	Hardshaw & Mann	5	96	18	47	5	95	11	75	181	14	16	1	9	15
36	Manchester & Warrington	5	181	52	150	5	164	34	161	359	25	21	15	28	25
37	North Wales/Gogledd Cymru	10	167	12	76	9	115	11	58	184	27	8	7	33	36
38	Pendle Hill	6	74	14	77	6	72	9	77	158	15	12	13	-1	11
39	Wirral & Chester	3	106	9	63	3	86	0	40	126	8	8	7	20	24
	N WALES & NW ENGLAND	37	793	140	509	36	671	88	508	1267	113	82	62	98	156
40	Northumbria	8	248	24	104	7	188	2	81	271	37	30	18	69	69
41	Teesdale & Cleveland	7	131	134	41	6	110	11	91	212	34	26	14	-11	26
42	Wensleydale & Swaledale	2	34	0	40	2	26	0	32	58	2	3	-1	0	5
	NE ENGLAND	17	413	158	185	15	324	13	204	541	73	59	31	58	100
43	Cambridgeshire	8	293	34	113	5	230	30	122	382	47	38	19	78	63
44	Norfolk & Waveney	11	297	28	194	10	229	24	142	395	50	19	18	71	72
	NORFOLK, CAMBS & HUNTS	19	590	62	307	15	459	54	264	777	97	57	37	149	135
45	East Scotland	4	94	9	56	3	66	0	34	100	20	11	19	13	26
46	North Scotland	13	129	8	173	6	124	12	108	244	35	18	10	17	28
47	South East Scotland	9	254	71	310	9	250	39	278	567	68	52	21	41	52

Table 5, continued

AM#	AM reference	LMs in 2015	Members 2015	Child attenders 2015	Adult attenders 2015	LMs in 2025	Members 2025	Child attenders 2025	Adult attenders 2025	Total members and attenders at end 2025	Members joining and leaving over ten year period				
											Convincements	Transfers in	Transfers out	Terminations	Deaths
48	West Scotland	12	216	43	193	12	226	11	151	388	53	38	10	34	34
	SCOTLAND	38	693	131	732	30	666	62	571	1299	176	119	60	105	140
49	Surrey & Hampshire Border	5	110	20	60	5	96	6	33	135	51	11	20	18	29
50	Sussex East	9	219	20	200	9	200	0	112	312	27	39	13	39	73
51	Sussex West	8	260	7	177	6	217	54	150	421	34	35	24	40	67
52	West Weald	7	150	21	97	7	115	6	104	225	15	4	12	14	53
	SUSSEX & SURREY	29	739	68	534	27	628	66	399	1093	127	89	69	111	222
53	Central England	18	517	64	314	14	404	32	232	668	57	45	39	53	102
54	Leicester	4	208	44	143	4	195	17	99	311	53	22	18	2	66
55	Staffordshire	7	125	7	84	7	105	0	50	155	38	14	15	17	30
	WARWICK, LEICS & STAFFS	29	850	115	541	25	704	49	381	1134	148	81	72	72	198
56	Gloucestershire	8	292	38	195	7	206	12	101	319	34	38	32	46	79
57	Mid-Wales/ Canolbarth Cymru	6	79	10	70	5	66	4	39	109	8	-2	8	8	15
58	South Wales/ De Cymru	13	235	46	129	11	191	23	122	336	45	34	30	55	50
59	Southern Marches/ y Gororau Deheuol	9	210	34	151	7	164	5	108	277	46	32	28	36	92
60	Worcestershire & Shropshire	7	195	19	93	6	161	8	75	244	32	24	26	39	39
	WESTERN	43	1011	147	638	36	788	52	445	1285	165	126	124	184	275
61	Kendal & Sedbergh	4	132	25	50	4	95	8	33	136	1	4	9	1	40
62	Lancashire Central & North	6	226	32	131	5	203	22	165	390	13	19	28	18	39
63	Swarthmoor (SW Cumbria)	4	54	4	29	3	37	1	38	76	3	3	3	4	24
	WESTMORLAND	14	412	61	210	12	335	31	236	602	17	26	40	23	103
64	Brighouse West Yorkshire	5	164	44	95	5	133	33	85	251	3	25	21	9	36
65	Central Yorkshire	6	135	12	50	6	101	4	43	148	34	10	12	17	32
66	Craven & Keighley	5	118	8	92	5	104	0	76	180	12	14	3	11	25
67	Leeds	7	230	24	117	6	168	36	131	335	27	19	16	66	58
68	Pickering & Hull	7	195	20	107	7	147	0	68	215	17	9	6	-19	72
69	Sheffield & Balby	4	213	49	115	4	173	40	81	294	31	29	14	44	23
70	York	5	427	84	183	5	344	50	206	600	63	68	22	56	95
	YORKSHIRE	39	1482	241	759	38	1,170	163	690	2023	187	174	94	184	341
BYM Total		481	13431	1799	8067	430	10539	952	6732	18223	2240	1470	1286	1736	3067

Boundary changes: Cumulative figures for convincements, transfers, terminations and deaths for the following meetings are estimated to reflect the proportion of the membership forming each new area meeting in the year they were formed.

Table 6. Area meetings by size, 2015 to 2025

AM#	AMs by number of members	Members			Attendees				Combined			Changes: ten year changes as percentage (%) of current AM				
		Members 2015	Members 2025	Average annual change Dec 2015–Dec 2025	Adult attendees 2015	Adult attendees 2025	Average annual change over 10 years	% Adults who are attendees in 2025	Total members and attendees at end 2025*	Change in total members & attendees 2015–2025	Increase or decrease as % of 2015 total	Convincements	Transfers in	Transfers out	Terminations	Deaths
53	Central England AM	517	404	-11.3	314	232	-8.2	36%	668	-227	-25%	15%	11%	11%	15%	25%
70	York AM	427	344	-8.3	183	206	2.3	37%	600	-94	-14%	22%	19%	5%	16%	29%
18	Devon AM	431	330	-10.1	261	225	-3.6	41%	556	-171	-24%	23%	12%	9%	18%	17%
7	Oxford & Swindon AM	354	304	-5	241	179	-6.2	37%	514	-109	-17%	16%	13%	12%	2%	21%
47	South East Scotland AM	254	250	-0.4	310	278	-3.2	53%	567	-68	-11%	26%	18%	14%	25%	21%
3	Luton & Leighton AM	298	245	-5.3	176	183	0.7	43%	445	-60	-12%	19%	8%	8%	19%	21%
28	London West AM	293	236	-5.7	226	142	-8.4	38%	392	-148	-27%	27%	14%	28%	8%	20%
24	Hampshire & Islands AM	307	233	-7.4	157	139	-1.8	37%	392	-104	-21%	24%	23%	16%	7%	27%
43	Cambridgeshire AM	293	230	-6.3	113	122	0.9	35%	382	-58	-13%	26%	20%	10%	31%	30%
8	Bristol AM	266	229	-3.7	154	161	0.7	41%	436	-34	-7%	33%	18%	19%	10%	26%
44	Norfolk & Waveney AM	297	229	-6.8	194	142	-5.2	38%	395	-124	-24%	25%	11%	7%	35%	33%
48	West Scotland AM	216	226	1	193	151	-4.2	40%	388	-64	-14%	25%	15%	6%	13%	17%
51	Sussex West AM	260	217	-4.3	177	150	-2.7	41%	421	-23	-5%	17%	17%	14%	22%	33%
56	Gloucestershire AM	292	206	-8.6	195	101	-9.4	33%	319	-206	-39%	17%	19%	14%	20%	39%
62	Lancashire Central & North AM	226	203	-2.3	131	165	3.4	45%	390	1	0%	7%	12%	15%	8%	13%
50	Sussex East AM	219	200	-1.9	116	112	-0.4	36%	312	-43	-12%	21%	16%	7%	21%	35%
54	Leicester AM	208	195	-1.3	143	99	-4.4	34%	311	-84	-21%	27%	13%	10%	1%	27%
10	Mid-Somerset AM	262	192	-7	75	64	-1.1	25%	257	-85	-25%	6%	13%	3%	2%	17%
58	South Wales AM	235	191	-4.4	129	122	-0.7	39%	336	-74	-18%	23%	23%	14%	28%	26%
40	Northumbria AM	248	188	-6	104	81	-2.3	30%	271	-105	-28%	23%	15%	10%	34%	36%
16	Nottinghamshire & Derbyshire AM	311	174	-13.7	114	84	-3	33%	258	-177	-41%	28%	15%	10%	7%	28%
69	Sheffield & Balby AM	213	173	-4	115	81	-3.4	32%	294	-83	-22%	21%	19%	11%	25%	13%
67	Leeds AM	230	168	-6.2	117	131	1.4	44%	335	-36	-10%	18%	14%	11%	42%	34%
13	West Wiltshire & East Somerset AM	181	165	-1.6	102	105	0.3	39%	296	-5	-2%	32%	22%	13%	10%	30%
36	Manchester & Warrington	181	164	-1.7	150	161	1.1	50%	359	-24	-6%	14%	13%	9%	13%	20%
59	Southern Marches AM	210	164	-4.6	151	108	-4.3	40%	277	-118	-30%	31%	26%	15%	21%	56%
60	Worcestershire & Shropshire AM	195	161	-3.4	93	75	-1.8	32%	244	-63	-21%	23%	15%	15%	20%	25%
17	Cornwall AM	223	156	-6.7	131	94	-3.7	38%	267	-121	-31%	37%	25%	10%	15%	46%
27	Kingston & Wandsworth AM	191	149	-4.2	109	101	-0.8	40%	261	-82	-24%	39%	14%	30%	22%	17%
68	Pickering & Hull AM	195	147	-4.8	107	68	-3.9	32%	215	-107	-33%	9%	7%	6%	8%	53%
34	East Cheshire AM	169	139	-3	96	97	0.1	41%	259	-41	-14%	21%	12%	13%	10%	28%
15	Lincolnshire AM	146	138	-0.8	49	83	3.4	38%	229	33	17%	33%	7%	14%	7%	20%
31	North West London AM	213	137	-7.6	138	127	-1.1	48%	264	-133	-34%	37%	11%	21%	4%	39%
14	Cumberland AM	159	136	-2.3	98	84	-1.4	38%	220	-46	-17%	9%	15%	12%	21%	36%
6	Mid-Thames AM	230	135	-9.5	190	142	-4.8	51%	290	-173	-37%	38%	23%	19%	39%	32%
32	South East London AM	168	135	-3.3	128	66	-6.2	33%	247	-98	-28%	23%	10%	28%	7%	19%
19	Ipswich & Diss AM	158	135	-2.3	81	58	-2.3	30%	194	-53	-21%	24%	23%	13%	11%	36%
64	Brighouse West Yorkshire AM	164	131	-3.3	95	85	-1	39%	249	-54	-18%	8%	18%	18%	9%	25%
23	Bournemouth Coastal AM	181	131	-5	86	62	-2.4	32%	193	-74	-28%	36%	8%	15%	14%	40%
9	Dorset & South Wiltshire AM	196	128	-6.8	180	126	-5.4	50%	263	-123	-32%	20%	26%	10%	34%	53%
33	South London AM	185	127	-5.8	54	35	-1.9	22%	169	-77	-31%	24%	5%	8%	20%	32%
46	North Scotland AM	129	124	-0.5	173	108	-6.5	47%	244	-66	-21%	28%	23%	13%	10%	19%
2	Hertford & Hitchin AM	156	124	-3.2	106	87	-1.9	41%	233	-47	-17%	22%	6%	15%	10%	26%
1	Chilterns AM	209	122	-8.7	114	86	-2.8	41%	213	-139	-39%	16%	13%	25%	36%	52%
52	West Weald AM	150	115	-3.5	97	104	0.7	47%	225	-43	-16%	14%	3%	17%	17%	42%
37	North Wales AM	167	115	-5.2	76	58	-1.8	34%	184	-71	-28%	28%	10%	6%	24%	35%
41	Teesdale & Cleveland AM	134	110	-2.4	41	91	5	45%	212	19	10%	31%	25%	11%	12%	26%
12	West Somerset AM	141	108	-3.3	69	73	0.4	40%	186	-42	-18%	24%	20%	19%	15%	28%
55	Staffordshire AM	125	105	-2	84	50	-3.4	32%	155	-61	-28%	36%	15%	14%	30%	24%
66	Craven & Keighley AM	118	104	-1.4	92	76	-1.6	42%	180	-38	-17%	19%	17%	17%	25%	25%
65	Central Yorkshire AM	135	104	-3.1	50	43	-0.7	29%	151	-46	-23%	28%	12%	14%	15%	26%
11	North Somerset AM	116	101	-1.5	54	41	-1.3	29%	149	-31	-17%	11%	27%	14%	2%	12%
49	Surrey & Hampshire Border AM	110	96	-1.4	60	33	-2.7	26%	135	-55	-29%	55%	11%	19%	21%	32%
35	Hardshaw & Mann AM	96	95	-0.1	47	75	2.8	44%	181	20	12%	21%	20%	9%	9%	19%
61	Kendal & Sedbergh AM	132	95	-3.7	50	33	-1.7	26%	136	-71	-34%	15%	7%	9%	1%	32%
25	East Kent AM	130	94	-3.6	89	68	-2.1	42%	168	-59	-26%	20%	18%	21%	16%	20%
21	Southern East Anglia AM	135	92	-4.3	60	54	-0.6	37%	146	-61	-29%	36%	11%	20%	72%	42%
30	North London AM	100	91	-0.9	70	65	-0.5	42%	172	-35	-17%	42%	18%	19%	4%	11%

Table 6, continued

AM#	AMs by number of members	Members			Attenders				Combined			Changes: ten year changes as percentage (%) of current AM				
		Members 2015	Members 2025	Average annual change 2015–2025	Adult attenders 2015	Adult attenders 2025	Average annual change 2015–2025	% Adults who are attenders in 2025	Total members and attenders at end 2025*	Change in total members & attenders 2015–2025	Increase or decrease as % of 2015 total	Convincements	Transfers in	Transfers out	Terminations	Deaths
20	Mid Essex AM	78	88	1	32	45	1.3	34%	138	19	16%	34%	5%	9%	10%	36%
5	Banbury & Evesham AM	121	88	-3.3	107	60	-4.7	41%	149	-92	-38%	16%	18%	23%	10%	50%
39	Wirral & Chester AM	106	86	-2	63	40	-2.3	32%	126	-52	-29%	15%	14%	10%	24%	30%
29	North East Thames AM	198	80	-11.8	68	65	-0.3	45%	166	-131	-44%	58%	26%	86%	39%	51%
38	Pendle Hill AM	74	72	-0.2	77	77	0	52%	158	-7	-4%	17%	7%	18%	15%	28%
22	Thaxted AM	80	68	-1.2	25	41	1.6	38%	119	14	13%	15%	7%	1%	12%	34%
57	Mid-Wales AM	79	66	-1.3	70	39	-3.1	37%	109	-50	-31%	15%	2%	11%	6%	18%
45	East Scotland AM	94	66	-2.8	56	34	-2.2	34%	100	-59	-37%	23%	21%	26%	15%	38%
26	West Kent AM	107	65	-4.2	57	45	-1.2	41%	111	-55	-33%	22%	22%	14%	3%	32%
4	Northamptonshire AM	91	57	-3.4	51	44	-0.7	44%	108	-43	-28%	44%	2%	19%	28%	49%
63	Swarthmoor (South West Cumbria) AM	54	37	-1.7	29	38	0.9	51%	76	-11	-13%	11%	14%	5%	5%	76%
42	Wensleydale & Swaledale AM	34	26	-0.8	40	32	-0.8	55%	58	-16	-22%	12%	8%	4%	8%	23%
Totals		13,401	10,539	-4.09	7,983	6,732	-1.79	39%	18,223	-4,844	-20%	24%	15%	15%	17%	30%
				Average			Average	Average			Average	Average				

AM reference # match numbers used in the map on the back cover.

* Includes children.

Figure 2. Area Meetings of Britain Yearly Meeting



Quakers share a way of life, not a set of beliefs. Quaker unity is based on shared understanding and a shared practice of silent worship – a communal stillness.

Quakers seek to experience God directly – internally, in relationships with others, and with the world. Local meetings for worship are open to all who wish to attend.

Quakers try to live with honesty and integrity. This means speaking truth to all, including people in positions of power. The Quaker commitment to peace arises from the conviction that love is at the heart of existence and that all human beings are unique and equal.

This leads Quakers to put faith into action by working locally and globally to change the systems that cause injustice and violent conflict.

Accessible versions of this document are available.

Please contact the publications manager at publications@quaker.org.uk or call 020 7663 1162

Britain Yearly Meeting of the Religious Society of Friends (Quakers)
Friends House, 173 Euston Road, London, NW1 2BJ
Registered charity number 1127633

Follow us on social media @BritishQuakers

www.quaker.org.uk