

Britain Yearly Meeting of the Religious
Society of Friends (Quakers)

Patterns of membership

including the 2020 tabular statement

Compiled for Yearly Meeting Gathering,
Online 19 July–8 August 2021



Membership patterns in Britain

Yearly Meeting

The tabular statement of membership has been published annually since 1861. It informs the yearly meeting of the number of Friends in membership, based on information provided by area meetings (see *Quaker faith & practice* 4.10h).

This document contains information down to area meeting level. Additional data, including local meeting data, will be available online at www.quaker.org.uk/ym.

Membership

Membership of the yearly meeting at the end of 2020 was 12,125 (12,498 in 2019), a decrease of 373. During the year 218 came into membership. The membership of 139 adults was terminated and area meetings recorded 330 deaths.

Attenders

The number of recorded attenders was 6,902 (6,965 in 2019) and there were 1,164 children not in membership (1,283 in 2019).

Marriages

There were 10 marriages in 2020 (29 in 2019). In 4 of these both partners were members of Britain Yearly Meeting; in 3, one partner was a member; and in 3, neither partner was a member. These figures include 1 same-sex and 9 opposite-sex marriages.

The statistical tables

Quakers in regions and general meetings of Britain

Table 1 provides a summary of incomings and outgoings for Britain Yearly Meeting as a whole. Membership fell by 2.98% over the year. New memberships fell by fifty-two compared to 2019. Terminations fell by fifty-four.

Table 2 (page 5) provides membership statistics for the yearly meeting since 1935.

Table 3 (page 6) provides a regional summary of the number of members and attenders as well as an indication of the proportion who are children, attenders and women. 60% of members and attenders are women and 60% of all adults are attenders. The

gender category of 'other' (introduced in 2015) has been used by a few area meetings. Meetings may wish to make members and attenders aware of the opportunity to be recorded this way.

Table 4 (page 7) summarises trends in membership over the last ten years. Convincements over ten years represent 2,913 Friends or 24% of total membership. Terminations over the same period were 1,910 and deaths were 3,069. This resulted in a decline in membership of 2,150 with notified changes from 2010. The overall decline in members and attenders in 2019 is from 20,746 to 20,191.

Area meetings

Table 5 (page 8-9) provides information on members, attenders and children for each area meeting, as well as information on those joining and leaving over the last ten years.

Table 6 (page 10-11) looks at trends at area meeting level over ten years. Over this time the membership of nine area meetings grew and in two area meetings, the total number of adults (members and attenders) grew by more than 10%.

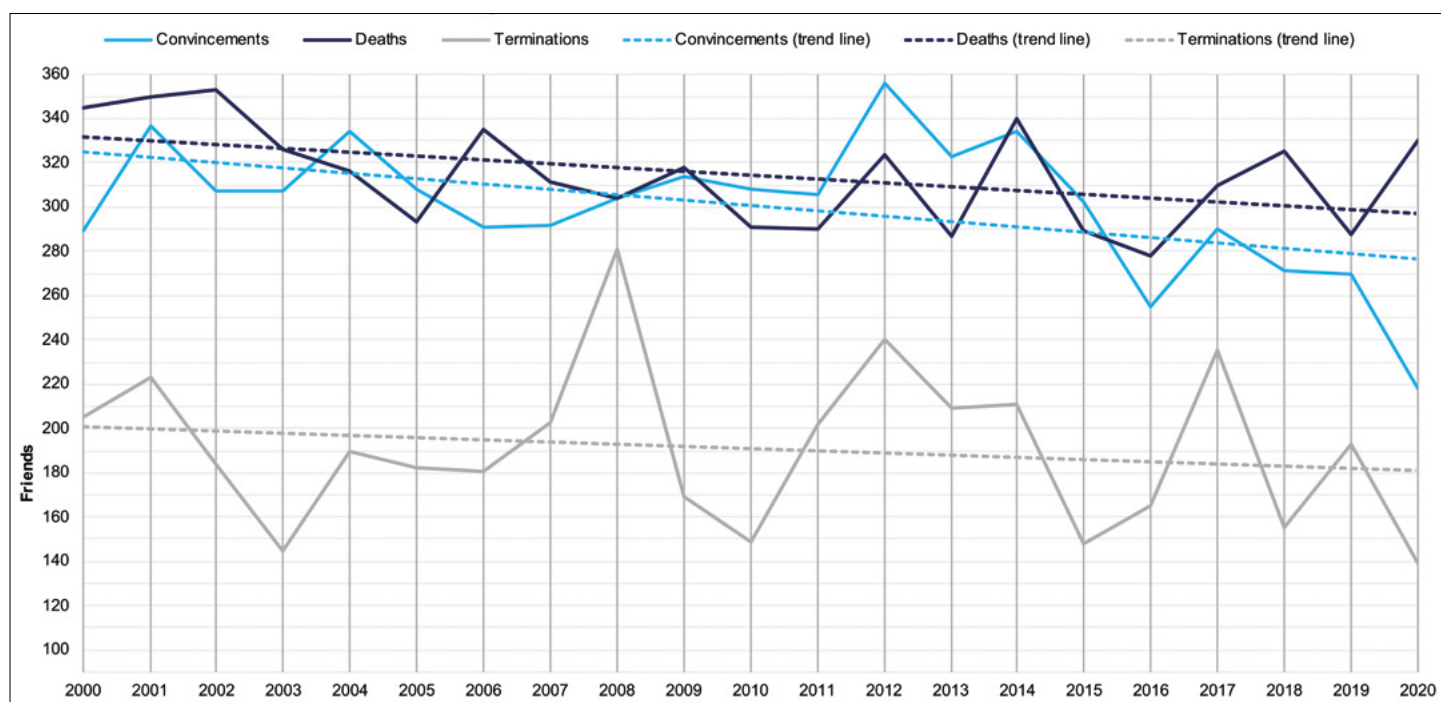
Local meetings

There were 463 local meetings (LMs) at the end of 2020. No meetings opened and six local meetings informed us of closure. Due to the Covid-19 pandemic, Friends were unable to meet in person throughout 2020. A significant number of Quakers gathered together online, either in local and area meeting groups or together nationally and internationally.

Table 1. Quakers coming into membership and ceasing to be members of Britain Yearly Meeting in 2020

Incomings	2019	2020	Outgoings	2019	2020
By application			By termination of membership		
Adults	268	218	initiative of member	101	87
Children	2	0	initiative of area meeting	92	52
			termination of children's membership	0	0
Subtotal	270	218	Subtotal	193	139
			By death	288	330
By certificate			By certificate		
from Britain Yearly Meeting	157	103	to Britain Yearly Meeting	149	103
from another yearly meeting	8	0	to another yearly meeting	9	8
Subtotal	165	103	Subtotal	154	111
Total notified incomings to AMs	435	321	Total notified outgoings from area meetings	635	580
	2019	2020		2019	2020
Members living abroad	114	117	Total number of members at start of year	12,666	12,498
Sojourning members	36	18	Recorded +/- in membership	-200	-259
			Balance of notified discrepancies	+32	-114
Number of area meetings	70	70	Number of members at end of year	12,498	12,125
Number of local meetings	469	463	<i>As a % of membership loss/gain</i>	-1.33%	-2.98%

Figure 1a. Flows in and out of BYM 2000-2020



A more detailed version of this graph can be found on page 12.

About the tabular statement

Since 2013, changes have been made to the tabular statement to help make the data more informative and to highlight important patterns and trends. All data is collected from area meetings but at local meeting level. Historical data from the last 20 years is being used to provide more information on trends.

Following requests from individuals and area meetings, Meeting for Sufferings asked the Recording Clerk to consider how best to provide information on gender. As a result, an additional category of “other” has been included (see Terminology below). Some meetings have chosen to use “other” to remove gender reporting in their meetings.

Terminology

Attender: one who, not being a member, frequently attends a specific meeting for worship (*Quaker faith & practice* II.38). Refers to an adult attender; children not in membership are identified separately.

Child: someone under 16 years old.

Member: one who is in membership of the Society. Unless stated differently, figures include children in membership.

Other: adults who have indicated a gender identity other than man or woman. This might include people who have stated they are agender, neutrois or who have a(nother) non-binary gender identity.

Sojourning member: a member of another yearly meeting, recognised as sojourning their membership within an area meeting in Britain (*Quaker faith & practice* II.27). Identified separately, they are not included in the membership figures.

Boundary changes

In 2015, North Cumbria AM and West Cumbria AM combined to form Cumberland AM. Where two area meetings combine to form a single one, figures provided for all years combine the data for the constituent meetings. Where area meetings have separated into more than one, membership information is based on the actual numbers for each of the constituent local meetings. Up to 2014, figures for flows (convincements, terminations, transfers and deaths) were only collected at area meeting level. Estimates are based on the proportion of the membership forming each new area meeting in the year they were formed. This applies to: North Somerset AM (formed 2011); West Wiltshire and East Somerset AM (formed 2011). Where a single local meeting moved from one area to another, it has not been possible to adjust the figures. Data

for that meeting is included with the area meeting of which it is part in any year. This affects Oundle LM which transferred from Cambridgeshire AM to Northamptonshire AM in 2010; and Chorley LM which transferred from Lancashire Central & North AM to Pendle Hill AM in 2016.

Year-end figures and corrections

Each area meeting is required to send tabular statement information for the year ending 31 December. Meetings are given an opportunity to correct previous year data with subsequent amendments to changes, (including transfers and deaths) which were minuted within the last year but not returned before the year-end deadline. In the past these revisions were included in the figures for the following year. As this distorts trends, the method adopted since 2014 is to modify membership figures each year to take into account corrections provided the following year. These corrections are indicated in the notified discrepancies row within Table I.

This document and supplementary tables are also available for download from:

www.quaker.org.uk/ym.

For other formats please contact:

Recording Clerk's Office,
Quakers in Britain
Friends House, 173 Euston Road,
London NW1 2BJ

E: tabstat@quaker.org.uk

Table 2. BYM membership statistics, 1935 to 2020

Date	Members			Attendees			Members plus attendees			Annual changes			
	Adult members	Child members	Total members	Adult attendees	Children not in membership	Total attendees	Adults	Children	Total-all	Members*	Adult members and attendees	Annual changes: children	Overall total changes
1935	17,251	2,050	19,301										
1940	17,821	2,006	19,827							105			
1945	17,851	2,683	20,534							141			
1950	17,486	3,309	20,795							52			
1955	17,439	3,904	21,343							110			
1960	17,655	3,567	21,222							-24			
1965	18,208	2,854	21,062	5,248	3,899	9,147	23,456	6,753	30,209	-32			
1970	18,832	1,920	20,752	5,796	4,345	10,141	24,628	6,265	30,893	-62	1,172	-488	684
1971	18,855	1,770	20,625	5,719	4,297	10,016	24,574	6,067	30,641	-127	-54	-198	-252
1972	18,888	1,618	20,506	5,354	4,500	9,854	24,242	6,118	30,360	-119	-332	51	-281
1973	18,912	1,474	20,386	5,696	4,649	10,345	24,608	6,123	30,731	-120	366	5	371
1974	18,918	1,324	20,242	5,697	4,555	10,252	24,615	5,879	30,494	-144	7	-244	-237
1975	18,865	1,133	19,998	5,830	4,685	10,515	24,695	5,818	30,513	-244	80	-61	19
1976	18,687	1,002	19,689	5,697	4,592	10,289	24,384	5,594	29,978	-309	-311	-224	-535
1977	18,598	895	19,493	6,003	4,576	10,579	24,601	5,471	30,072	-196	217	-123	94
1978	18,321	782	19,103	5,985	4,484	10,469	24,306	5,266	29,572	-390	-295	-205	-500
1979	18,064	720	18,784	6,104	4,526	10,630	24,168	5,246	29,414	-319	-138	-20	-158
1980	17,891	658	18,549	5,880	4,278	10,158	23,771	4,936	28,707	-235	-397	-310	-707
1981	17,790	601	18,391	6,243	4,611	10,854	24,033	5,212	29,245	-158	262	276	538
1982	17,741	562	18,303	6,557	4,836	11,393	24,298	5,398	29,696	-88	265	186	451
1983	17,631	500	18,131	6,788	4,655	11,443	24,419	5,155	29,574	-172	121	-243	-122
1984	17,574	471	18,045	7,358	4,956	12,314	24,932	5,427	30,359	-86	513	272	785
1985	17,605	471	18,076	7,732	5,006	12,738	25,337	5,477	30,814	31	405	50	455
1986	17,636	435	18,071	7,936	5,188	13,124	25,572	5,623	31,195	-5	235	146	381
1987	17,692	395	18,087	8,174	5,203	13,377	25,866	5,598	31,464	16	294	-25	269
1988	17,640	370	18,010	8,529	5,089	13,618	26,169	5,459	31,628	-77	303	-139	164
1989	17,709	361	18,070	8,691	5,183	13,874	26,400	5,544	31,944	60	231	85	316
1990	17,765	319	18,084	8,758	5,114	13,872	26,523	5,433	31,956	14	123	-111	12
1991	17,760	312	18,072	8,997	5,340	14,337	26,757	5,652	32,409	-12	234	219	453
1992	17,651	283	17,934	8,995	4,886	13,881	26,646	5,169	31,815	-138	-111	-483	-594
1993	17,549	253	17,802	9,207	4,857	14,064	26,756	5,110	31,866	-132	110	-59	51
1994	17,351	228	17,579	8,958	4,898	13,856	26,309	5,126	31,435	-223	-447	16	-431
1995	17,296	222	17,518	8,901	4,629	13,530	26,197	4,851	31,048	-61	-112	-275	-387
1996	17,119	211	17,330	9,054	4,458	13,512	26,173	4,669	30,842	-188	-24	-182	-206
1997	16,998	191	17,189	9,129	4,304	13,433	26,127	4,495	30,622	-141	-46	-174	-220
1998	16,786	192	16,978	9,201	4,108	13,309	25,987	4,300	30,287	-211	-140	-195	-335
1999	16,532	179	16,711	9,038	4,046	13,084	25,570	4,225	29,795	-267	-417	-75	-492
2000	16,312	174	16,486	9,058	3,770	12,828	25,370	3,944	29,314	-225	-200	-281	-481
2001	16,032	169	16,201	8,719	3,635	12,354	24,751	3,804	28,555	-285	-619	-140	-759
2002	15,796	149	15,945	8,412	3,453	11,865	24,208	3,602	27,810	-256	-543	-202	-745
2003	15,615	142	15,757	8,565	3,382	11,947	24,180	3,524	27,704	-188	-28	-78	-106
2004	15,415	133	15,548	8,468	3,017	11,485	23,883	3,050	26,933	-209	-297	-474	-771
2005	15,273	101	15,374	8,127	2,764	10,891	23,404	2,865	26,269	-170	-479	-185	-664
2006	15,065	82	15,147	8,164	2,475	10,639	23,212	2,557	25,769	-248	-192	-308	-500
2007	14,847	63	14,910	8,133	2,228	10,361	22,980	2,291	25,271	-220	-232	-266	-498
2008	14,552	55	14,607	8,017	2,190	10,207	22,569	2,245	24,814	-303	-411	-46	-457
2009	14,371	59	14,430	8,330	2,237	10,567	22,701	2,296	24,997	-177	132	51	183
2010	14,220	55	14,275	8,560	2,196	10,756	22,780	2,251	25,031	-155	79	-45	34
2011	14,048	49	14,097	8,711	2,107	10,818	22,759	2,156	24,915	-178	-21	-95	-116
2012	13,873	43	13,916	8,681	2,004	10,685	22,554	2,047	24,601	-181	-205	-109	-314
2013	13,656	47	13,703	8,495	1,984	10,479	22,151	2,031	24,182	-213	-403	-16	-419
2014	13,483	44	13,527	8,409	1,947	10,356	21,871	1,990	23,861	-176	-280	-41	-321
2015	13,335	41	13,376	7,983	1,683	9,666	21,318	1,724	23,042	-151	-553	-266	-819
2016	13,146	42	13,188	8,131	1,544	9,675	21,277	1,586	22,863	-188	-41	-138	-179
2017	12,884	48	12,892	7,955	1,506	9,461	20,799	1,554	22,353	-296	-478	-32	-510
2018	12,624	42	12,666	7,433	1,476	8,909	20,057	1,518	21,575	-226	-742	-36	-778
2019	12,386	112	12,498	6,965	1,283	8,248	19,351	1,395	20,746	-168	-706	-123	-829
2020	12,032	93	12,125	6,902	1,164	8,066	18,934	1,257	20,191	-373	-417	-138	-555

* Membership change figures for 1940 to 1960 are annual averages for each five-year period.

Membership figures from 2000 are adjusted to include subsequent corrections provided by area meetings.

Table 3. Quakers in regions and general meetings of Britain, 2020: summary

Region	Number of members at end 2020						Number of attenders at end 2020						Members plus attenders at end 2020						Percent of total who are children	Percent of adults who are attenders	Percent of adults who are women
	Men	Women	Other	Unspecified / not disclosed (adults)	Children	Total	Men	Women	Other	Children	Unspecified / not disclosed (adults)	Total adults	Men	Women	Other	Children	Unspecified / not disclosed (adults)	Total adults			
Bedfordshire	268	392	-	-	-	660	143	251	-	66	-	460	411	643	-	66	-	1,054			
Berks & Oxon	214	399	-	-	3	616	175	234	-	83	-	492	389	633	-	107	-	1,022			
Bristol & Wessex	373	699	1	-	13	1,086	175	337	5	94	-	611	548	1,036	6	107	-	1,590			
Cumberland	55	95	-	-	1	151	24	46	-	4	-	74	79	141	-	5	-	220			
Derbys, Lincs & Notts	162	233	1	-	-	396	100	144	-	30	-	274	262	377	1	30	-	640			
Devon & Cornwall	203	302	-	-	-	505	161	240	-	19	-	420	364	542	-	19	-	906			
Essex & Suffolk	153	273	1	-	-	427	74	109	-	27	-	215	227	382	1	27	-	610			
Hants, SE Dorset & Islands	50	108	-	278	-	436	24	48	-	34	179	285	74	156	-	34	457	687			
Kent	67	140	-	-	-	207	55	70	-	6	-	131	122	210	-	6	-	332			
London	434	747	2	-	1	1,184	264	409	15	134	-	822	698	1,156	17	135	-	1,871			
N Wales & NW England	260	492	-	-	1	753	207	266	1	120	-	594	467	758	1	121	-	1,226			
NE England	155	236	1	-	3	395	80	122	-	33	-	235	235	358	1	36	-	594			
Norfolk, Cambs & Hunts	216	328	-	-	1	545	110	188	32	41	-	371	326	516	32	42	-	874			
Scotland	238	440	-	-	-	678	185	263	-	107	-	555	423	703	-	107	-	1,126			
Sussex & Surrey	251	427	-	-	4	682	170	270	-	66	-	506	421	697	-	70	-	1,118			
Warwick, Leics & Staffs	114	211	-	448	2	775	61	85	-	67	235	448	175	296	-	69	683	1,154			
Western	325	557	3	-	-	885	228	367	3	79	-	677	553	924	6	79	-	1,483			
Westmorland	136	235	-	-	3	374	78	123	-	33	-	234	214	358	-	36	-	572			
Yorkshire	478	828	3	-	61	1,370	212	334	-	121	-	667	690	1,162	3	182	-	1,855			
REGIONAL TOTALS	4,152	7,142	12	726	93	12,125	2,526	3,906	56	1,164	414	8,066	6,678	11,048	68	1,257	1,140	18,934			
WALES TOTALS	156	290	-	-	-	446	148	219	-	55	-	422	304	509	-	55	-	813			
SCOTLAND TOTALS	238	440	-	-	-	678	185	263	-	107	-	555	423	703	-	107	-	1,126			
ENGLAND TOTALS	3,758	6,412	12	726	93	11,001	2,193	3,424	56	1,002	414	7,089	5,951	9,836	68	1,095	1,140	16,995			

Table 4. Membership changes in regions and general meetings of Britain, 2020: recent trends

Region	Members				Members and attenders		% of adults who are members		Convincements		Deaths		Terminations		Net geographic moves		
	2020	2019	2010	Change in recorded membership 2019-2020	Change in membership 2010-2020	2020	2019	2010	2020	2010	2020	2020	2010	2020	2020	Ten year net 2019-2010	
Bedfordshire	660	676	850	-16	-190	1,120	1,163	1,516	56.1%	17	16	26	16	5	7	0	-31
Berks & Oxon	616	638	769	-22	-153	1,108	1,168	1,482	51.9%	8	10	18	14	7	1	-5	-13
Bristol & Wessex	1,086	1,100	1,202	-14	-116	1,697	1,694	2,084	57.7%	21	27	28	39	7	6	4	49
Cumberland	151	148	194	3	-43	225	243	290	66.9%	3	2	0	8	0	0	0	2
Derbys, Lincs & Notts	396	400	456	-4	-60	670	667	768	59.4%	5	6	9	3	0	4	1	-2
Devon & Cornwall	505	605	629	-100	-124	925	952	1,082	58.1%	11	10	8	8	4	1	-2	30
Essex & Suffolk	427	431	523	-4	-96	637	646	859	60.9%	7	16	11	14	1	17	-2	-10
Hants, SE Dorset & Islands	436	457	495	-21	-59	721	773	820	60.4%	9	9	18	15	11	5	-2	11
Kent	207	215	256	-8	-49	338	333	463	55.3%	2	5	7	3	2	2	-1	5
London	1,184	1,238	1,444	-54	-260	2,006	2,211	2,488	58.0%	26	52	25	23	36	23	-16	-115
N Wales & NW England	753	762	870	-9	-117	1,347	1,432	1,590	54.7%	16	21	16	22	7	10	0	-3
NE England	395	401	445	-6	-50	630	618	741	60.1%	10	8	12	14	3	9	0	3
Norfolk, Cambs & Hunts	545	556	630	-11	-85	916	852	1,055	59.7%	8	17	15	4	7	6	3	19
Scotland	678	683	720	-5	-42	1,233	1,305	1,456	49.5%	16	16	20	6	3	18	1	1
Sussex & Surrey	682	696	817	-14	-135	1,188	1,183	1,370	59.6%	10	18	18	15	13	15	9	4
Warwick, Leics & Staffs	775	789	944	-14	-169	1,223	1,237	1,590	59.4%	11	17	20	26	5	1	2	16
Western	885	906	1,060	-21	-175	1,562	1,560	1,944	54.5%	12	21	29	17	9	3	7	23
Westmorland	374	386	415	-12	-41	608	630	770	53.9%	3	1	13	8	2	6	-2	9
Yorkshire	1,370	1,411	1,596	-41	-226	2,037	2,079	2,703	59.0%	23	34	37	36	17	15	1	46
REGIONAL TOTALS	12,125	12,498	14,315	-373	-2,190	20,191	20,746	25,071	60.3%	218	306	330	291	139	149	-0.11	2.32

Table 5. Changes in membership, 2010 to 2020

AM#	AM reference	LMs in 2010	Members 2010	Child attenders 2010	Adult attenders 2010	LMs in 2020	Members 2020	Child attenders 2020	Adult attenders 2020	Total members and attenders at end 2020	Members joining and leaving over ten year period				
											Convincements	Transfers in	Transfers out	Terminations	Deaths
1	Chilterns	7	220	53	186	7	149	19	94	262	37	18	34	38	67
2	Hertford & Hitchin	7	201	19	91	6	145	11	95	251	29	6	21	29	38
3	Luton & Leighton	10	335	57	197	9	285	27	156	468	60	20	35	44	44
4	Northamptonshire	4	94	0	63	4	81	9	49	139	23	26	11	21	24
	BEDFORDSHIRE	28	850	129	537	26	660	66	394	1,120	149	70	101	132	173
5	Banbury & Evesham	6	138	28	135	6	97	7	73	177	15	18	20	9	49
6	Mid-Thames	7	282	60	193	7	208	40	150	398	61	30	38	77	48
7	Oxford & Swindon	9	349	52	245	9	311	36	186	533	50	41	44	8	63
	BERKS & OXON	22	769	140	573	22	616	83	409	1,108	126	89	102	94	160
8	Bristol	7	261	71	178	7	263	54	151	468	79	43	40	26	47
9	Dorset & South Wiltshire	6	206	36	187	6	177	0	101	278	40	43	12	23	73
10	Mid-Somerset	6	283	12	71	4	232	13	58	303	20	16	18	6	43
11	North Somerset	10	314	32	208	4	101	0	33	134	23	22	19	6	28
12	West Somerset	7	138	17	70	7	129	14	70	213	25	24	18	18	31
13	West Wiltshire & East Somerset	n/a	n/a	n/a	n/a	6	184	13	104	301	51	30	22	20	44
	BRISTOL & WESSEX	36	1,202	168	714	34	1086	94	517	1,697	238	178	129	99	266
14	Cumberland	7	194	13	83	6	151	4	70	225	15	23	21	26	63
	CUMBERLAND	7	194	13	83	6	151	4	70	225	15	23	21	26	63
15	Lincolnshire	7	146	7	54	8	145	11	58	214	48	13	21	12	23
16	Nottinghamshire & Derbyshire	9	310	46	205	9	251	19	186	456	53	29	23	14	42
	DERBYS, LINCS & NOTTS	16	456	53	259	17	396	30	244	670	101	42	44	26	65
17	Cornwall	9	195	38	130	8	209	19	112	340	71	46	16	22	49
18	Devon	13	434	55	230	13	296	0	289	585	74	51	27	63	65
	DEVON & CORNWALL	22	629	93	360	21	505	19	401	925	145	97	43	85	114
19	Ipswich & Diss	7	167	15	95	6	165	8	78	251	47	26	19	21	43
20	Mid-Essex	4	91	7	54	3	76	2	21	99	26	2	7	9	23
21	Southern East Anglia	3	173	19	75	5	115	6	37	158	37	4	17	54	35
22	Thaxted	4	92	18	53	4	71	11	47	129	13	6	5	17	27
	ESSEX & SUFFOLK	18	523	59	277	18	427	27	183	637	123	38	48	101	128
23	Bournemouth Coastal	5	165	12	98	6	158	0	72	230	57	21	15	20	52
24	Hampshire & Islands	11	330	42	173	11	278	34	179	491	77	52	47	15	73
	HANTS, SE DORSET & ISLANDS	16	495	54	271	17	436	34	251	721	134	73	62	35	125
25	East Kent	5	133	14	81	5	110	6	66	182	23	20	16	20	24
26	West Kent	5	123	18	94	5	97	0	59	156	18	16	15	2	22
	KENT	10	256	32	175	10	207	6	125	338	41	36	31	22	46
27	Kingston & Wandsworth	5	179	28	124	5	165	25	125	315	80	18	47	28	25
28	London West	7	326	38	225	7	261	11	154	426	70	36	56	48	50
29	North East Thames	7	217	45	81	7	176	20	58	254	55	22	42	20	42
30	North London	5	90	25	57	5	102	24	64	190	42	22	18	3	16
31	North West London	6	258	26	118	7	171	15	156	342	50	12	46	30	51
32	South East London	5	169	51	137	4	152	23	83	258	49	19	32	10	30
33	South London	5	205	18	71	5	157	16	48	221	44	9	12	25	44
	LONDON	40	1,444	231	813	40	1184	134	688	2,006	390	138	253	164	258
34	East Cheshire	7	170	18	81	8	157	14	73	244	37	19	14	11	45
35	Hardshaw & Mann	5	102	17	100	5	91	24	69	184	33	15	12	8	20
36	Manchester & Warrington	5	197	54	123	5	185	60	109	354	30	16	18	22	30
37	North Wales/Gogledd Cymru	10	173	33	96	10	140	14	91	245	41	17	16	38	41
38	Pendle Hill	6	107	19	87	6	77	0	69	146	14	6	13	22	23
39	Wirral & Chester	3	121	17	75	3	103	8	63	174	17	14	17	18	29
	N WALES & NW ENGLAND	36	870	158	562	37	753	120	474	1,347	172	87	90	119	188
40	Northumbria	8	260	34	136	8	234	18	111	363	56	23	31	53	59
41	Teesdale & Cleveland	8	152	16	68	6	133	15	56	204	34	22	11	25	24
42	Wensleydale & Swaledale	2	33	2	40	2	28	0	35	63	3	1	1	1	6
	NE ENGLAND	18	445	52	244	16	395	33	202	630	93	46	43	79	89
43	Cambridgeshire	7	298	38	166	8	262	41	95	398	83	38	32	67	57
44	Norfolk & Waveney	11	332	37	184	10	283	0	235	518	69	29	16	62	67
	NORFOLK, CAMBS & HUNTS	18	630	75	350	18	545	41	330	916	152	67	48	129	124
45	East Scotland	4	108	15	51	3	81	11	52	144	15	15	17	11	25
46	North Scotland	12	123	26	119	8	136	18	101	255	37	24	24	20	16
47	South East Scotland	8	265	91	242	9	235	70	200	505	52	30	45	65	39
48	West Scotland	9	224	57	135	12	226	8	95	329	63	33	15	28	43

Table 5, continued

AM#	AM reference	LMs in 2010	Members 2010	Child attenders 2010	Adult attenders 2010	LMs in 2020	Members 2020	Child attenders 2020	Adult attenders 2020	Total members and attenders at end 2020	Members joining and leaving over ten year period				
											Convincements	Transfers in	Transfers out	Terminations	Deaths
	SCOTLAND	33	720	189	547	32	678	107	448	1,233	167	102	101	124	123
49	Surrey & Hampshire Border	5	133	21	65	5	107	0	42	149	55	8	21	26	30
50	Sussex East	9	238	22	134	9	202	0	146	348	57	36	14	52	66
51	Sussex West	8	280	30	171	8	239	44	146	429	55	44	31	54	67
52	West Weald	8	166	21	89	7	134	22	106	262	31	4	22	23	45
	SUSSEX & SURREY	30	817	94	459	29	682	66	440	1,188	198	92	88	155	208
53	Central England	17	580	100	262	17	448	46	235	729	72	64	51	66	125
54	Leicester	4	224	46	138	4	203	16	80	299	43	18	20	2	61
55	Staffordshire	7	140	10	90	7	124	5	66	195	38	15	10	26	22
	WARWICK, LEICS & STAFFS	28	944	156	490	28	775	67	381	1,223	153	97	81	94	208
56	Gloucestershire	8	305	22	213	8	233	22	107	362	41	48	38	48	84
57	Mid-Wales/ Canolbarth Cymru	6	73	24	63	6	80	11	82	173	11	3	8	3	10
58	South Wales/ De Cymru	14	251	57	165	12	197	26	155	378	53	28	29	49	53
59	Southern Marches/ y Gororau Deheuol	9	215	42	183	8	196	7	156	359	60	52	34	28	91
60	Worcestershire & Shropshire	7	216	26	89	6	179	13	98	290	52	22	21	33	52
	WESTERN	44	1,060	171	713	40	885	79	598	1,562	217	153	130	161	290
61	Kendal & Sedbergh	4	128	35	91	4	115	10	45	170	14	12	13	0	31
62	Lancashire Central & North	8	221	33	153	5	209	23	124	356	25	28	26	21	32
63	Swarthmoor (SW Cumbria)	4	66	3	40	4	50	0	32	82	5	9	1	3	31
	WESTMORLAND	16	415	71	284	13	374	33	201	608	44	49	40	24	94
64	Brighouse West Yorkshire	5	163	40	95	5	152	23	69	244	14	29	23	14	22
65	Central Yorkshire	7	145	28	82	6	116	13	49	178	39	16	16	31	27
66	Craven & Keighley	5	145	19	90	5	116	14	69	199	27	18	15	26	27
67	Leeds	7	235	36	136	7	181	31	93	305	44	29	26	68	58
68	Pickering & Hull	7	279	15	100	7	167	9	88	264	16	12	16	49	85
69	Sheffield & Balby	4	201	43	117	4	214	1	39	254	51	25	15	13	29
70	York	5	428	77	229	5	424	30	139	593	64	54	26	40	99
	YORKSHIRE	40	1,596	258	849	39	1370	121	546	2,037	255	183	137	241	347
	Subtotal	478	14,315	2,196	8,560	463	12,125	1,164	6,902	20,191	2,913	1,660	1,592	1,910	3,069
	Notified corrections to 2010		-17												
	BYM Total	478	14,298	2,196	8,560	463	12,125	1,164	6,902	20,191	2,913	1,660	1,592	1,910	3,069

Table 6. Area meetings by size, 2010 to 2020

AM#	AMs by number of members	Members			Attendees				Combined			Changes: ten year changes as percentage (%) of current AM				
		Members 2010	Members 2020	Average annual change 2010-2020	Adult attendees 2010	Adult attendees 2020	Average annual change 2010-2020	% Adults who are attendees in 2020	Total members and attendees at end 2020*	Change in total members & attendees 2010-2020	Increase or decrease as % of 2010 total	Convincements	Transfers in	Transfers out	Terminations	Deaths
53	Central England AM	580	448	-13.2	262	235	-2.7	34%	729	-213	-23%	16%	14%	11%	15%	28%
70	York AM	428	424	-0.4	229	139	-9	25%	593	-141	-19%	15%	13%	6%	9%	23%
7	Oxford & Swindon AM	349	311	-3.8	245	186	-5.9	37%	533	-113	-17%	16%	13%	14%	3%	20%
18	Devon AM	434	296	-13.8	230	289	5.9	49%	585	-134	-19%	25%	17%	9%	21%	22%
3	Luton & Leighton AM	335	285	-5	197	156	-4.1	35%	468	-121	-21%	21%	7%	12%	15%	15%
44	Norfolk & Waveney AM	332	283	-4.9	184	235	5.1	45%	518	-35	-6%	24%	10%	6%	22%	24%
24	Hampshire & Islands AM	330	278	-5.2	173	179	0.6	39%	491	-54	-10%	28%	19%	17%	5%	26%
8	Bristol AM	261	263	0.2	178	151	-2.7	36%	468	-42	-8%	30%	16%	15%	10%	18%
43	Cambridgeshire AM	298	262	-3.6	166	95	-7.1	27%	398	-104	-21%	32%	15%	12%	26%	22%
28	London West AM	326	261	-6.5	225	154	-7.1	37%	426	-163	-28%	27%	14%	21%	18%	19%
16	Nottinghamshire & Derbyshire AM	310	251	-5.9	205	186	-1.9	43%	456	-105	-19%	21%	12%	9%	6%	17%
51	Sussex West AM	280	239	-4.1	171	146	-2.5	38%	429	-52	-11%	23%	18%	13%	23%	28%
47	South East Scotland AM	265	235	-3	242	200	-4.2	46%	505	-93	-16%	22%	13%	19%	28%	17%
40	Northumbria AM	260	234	-2.6	136	111	-2.5	32%	363	-67	-16%	24%	10%	13%	23%	25%
56	Gloucestershire AM	305	233	-7.2	213	107	-10.6	31%	362	-178	-33%	18%	21%	16%	21%	36%
10	Mid-Somerset AM	283	232	-5.1	71	58	-1.3	20%	303	-63	-17%	9%	7%	8%	3%	19%
48	West Scotland AM	224	226	0.2	135	95	-4	30%	329	-87	-21%	28%	15%	7%	12%	19%
69	Sheffield & Balby AM	201	214	1.3	117	39	-7.8	15%	254	-107	-30%	24%	12%	7%	6%	14%
17	Cornwall AM	195	209	1.4	130	112	-1.8	35%	340	-23	-6%	34%	22%	8%	11%	23%
62	Lancashire Central & North AM	221	209	-1.2	153	124	-2.9	37%	356	-51	-13%	12%	13%	12%	10%	15%
6	Mid-Thames AM	282	208	-7.4	193	150	-4.3	42%	398	-137	-26%	29%	14%	18%	37%	23%
54	Leicester AM	224	203	-2.1	138	80	-5.8	28%	299	-109	-27%	21%	9%	10%	1%	30%
50	Sussex East AM	238	202	-3.6	134	146	1.2	42%	348	-46	-12%	28%	18%	7%	26%	33%
58	South Wales AM	251	197	-5.4	165	155	-1	44%	378	-95	-20%	27%	14%	15%	25%	27%
59	Southern Marches AM	215	196	-1.9	183	156	-2.7	44%	359	-81	-18%	31%	27%	17%	14%	46%
36	Hardshaw and Mann AM	197	185	-1.2	123	109	-1.4	37%	354	-20	-5%	16%	9%	10%	12%	16%
13	West Wiltshire & East Somerset AM	n/a	184	n/a	n/a	104	n/a	36%	301	n/a	n/a	28%	16%	12%	11%	24%
67	Leeds AM	235	181	-5.4	136	93	-4.3	34%	305	-102	-25%	24%	16%	14%	38%	32%
60	Worcestershire & Shropshire AM	216	179	-3.7	89	98	0.9	35%	290	-41	-12%	29%	12%	12%	18%	29%
9	Dorset & South Wiltshire AM	206	177	-2.9	187	101	-8.6	36%	278	-151	-35%	23%	24%	7%	13%	41%
29	North East Thames AM	217	176	-4.1	81	58	-2.3	25%	254	-89	-26%	31%	13%	24%	11%	24%
31	North West London AM	258	171	-8.7	118	156	3.8	48%	342	-60	-15%	29%	7%	27%	18%	30%
68	Pickering & Hull AM	279	167	-11.2	100	88	-1.2	35%	264	-130	-33%	10%	7%	10%	29%	51%
19	Ipswich & Diss AM	167	165	-0.2	95	78	-1.7	32%	251	-26	-9%	28%	16%	12%	13%	26%
27	Kingston & Wandsworth AM	179	165	-1.4	124	125	0.1	43%	315	-16	-5%	48%	11%	28%	17%	15%
23	Bournemouth Coastal AM	165	158	-0.7	98	72	-2.6	31%	230	-45	-16%	36%	13%	9%	13%	33%
33	South London AM	205	157	-4.8	71	48	-2.3	23%	221	-73	-25%	28%	6%	8%	16%	28%
34	East Cheshire AM	170	157	-1.3	81	73	-0.8	32%	244	-25	-9%	24%	12%	9%	7%	29%
32	South East London AM	169	152	-1.7	137	83	-5.4	35%	258	-99	-28%	32%	13%	21%	7%	20%
64	Brighouse West Yorkshire AM	163	152	-1.1	95	69	-2.6	31%	244	-54	-18%	9%	19%	15%	9%	14%
14	Cumberland AM	194	151	-4.3	83	70	-1.3	32%	225	-65	-22%	10%	15%	14%	17%	42%
1	Chilterns AM	220	149	-7.1	186	94	-9.2	39%	262	-197	-43%	25%	12%	23%	26%	45%
2	Hertford & Hitchin AM	201	145	-5.6	91	95	0.4	40%	251	-60	-19%	20%	4%	14%	20%	26%
15	Lincolnshire AM	146	145	-0.1	54	58	0.4	29%	214	7	3%	33%	9%	14%	8%	16%
38	North Wales AM	107	140	3.3	87	91	0.4	39%	245	32	15%	10%	4%	9%	16%	16%
46	North Scotland AM	123	136	1.3	119	101	-1.8	43%	255	-13	-5%	27%	18%	18%	15%	12%
52	West Weald AM	166	134	-3.2	89	106	1.7	44%	262	-14	-5%	23%	3%	16%	17%	34%
41	Teesdale & Cleveland AM	152	133	-1.9	68	56	-1.2	30%	204	-32	-14%	26%	17%	8%	19%	18%
12	West Somerset AM	138	129	-0.9	70	70	0	35%	213	-12	-5%	19%	19%	14%	14%	24%
55	Staffordshire AM	140	124	-1.6	90	66	-2.4	35%	195	-45	-19%	31%	12%	8%	21%	18%
65	Central Yorkshire AM	145	116	-2.9	82	49	-3.3	30%	178	-77	-30%	34%	14%	14%	27%	23%
66	Craven & Keighley AM	145	116	-2.9	90	69	-2.1	37%	199	-55	-22%	23%	16%	13%	22%	23%
21	Southern East Anglia AM	173	115	-5.8	75	37	-3.8	24%	158	-109	-41%	32%	3%	15%	47%	30%
61	Kendal & Sedbergh AM	128	115	-1.3	91	45	-4.6	28%	170	-84	-33%	12%	10%	11%	0%	27%
25	East Kent AM	133	110	-2.3	81	66	-1.5	38%	182	-46	-20%	21%	18%	15%	18%	22%
49	Surrey & Hampshire Border AM	133	107	-2.6	65	42	-2.3	28%	149	-70	-32%	51%	7%	20%	24%	28%
39	Wirral & Chester AM	121	103	-1.8	75	63	-1.2	38%	174	-39	-18%	17%	14%	17%	17%	28%
30	North London AM	90	102	1.2	57	64	0.7	39%	190	18	10%	41%	22%	18%	3%	16%

Table 6, continued

AM#	AMs by number of members	Members			Attendees				Combined			Changes: ten year changes as percentage (%) of current AM				
		Members 2010	Members 2020	Average annual change 2010-2020	Adult attendees 2010	Adult attendees 2020	Average annual change 2010-2020	% Adults who are attendees in 2020	Total members and attendees at end 2020*	Change in total members & attendees 2010-2020	Increase or decrease as % of 2010 total	Convincements	Transfers in	Transfers out	Terminations	Deaths
11	North Somerset AM	314	101	-21.3	208	33	-17.5	25%	134	-420	n/a	23%	22%	19%	6%	28%
5	Banbury & Evesham AM	138	97	-4.1	135	73	-6.2	43%	177	-124	-41%	15%	19%	21%	9%	51%
26	West Kent AM	123	97	-2.6	94	59	-3.5	38%	156	-79	-34%	19%	16%	15%	2%	23%
35	Manchester & Warrington AM	102	91	-1.1	100	69	-3.1	43%	184	-35	-16%	36%	16%	13%	9%	22%
4	Northamptonshire AM	94	81	-1.3	63	49	-1.4	38%	139	-18	-11%	28%	32%	14%	26%	30%
45	East Scotland AM	108	81	-2.7	51	52	0.1	39%	144	-30	-17%	19%	19%	21%	14%	31%
57	Mid-Wales AM	73	80	0.7	63	82	1.9	51%	173	13	8%	14%	4%	10%	4%	13%
37	Pendle Hill AM	173	77	-9.6	96	69	-2.7	47%	146	-156	-52%	53%	22%	21%	49%	53%
20	Mid Essex AM	91	76	-1.5	54	21	-3.3	22%	99	-53	-35%	34%	3%	9%	12%	30%
22	Thaxted AM	92	71	-2.1	53	47	-0.6	40%	129	-34	-21%	18%	8%	7%	24%	38%
63	Swarthmoor (SW Cumbria) AM	66	50	-1.6	40	32	-0.8	39%	82	-27	-25%	10%	18%	2%	6%	62%
42	Wensleydale & Swaledale AM	33	28	-0.5	40	35	-0.5	56%	63	-12	-16%	11%	4%	4%	4%	21%
Totals		14,315	12,125	-3.44 Average	8,560	6,902	-2.55 Average	36% Average	20,191	-5,181	-19% Average	25%	14%	13%	16%	26%
											Average					

AM reference # match numbers used in the map on the back cover.

* Includes children.

Figure 1b. Members and Attenders by Area Meeting, 2010-2020

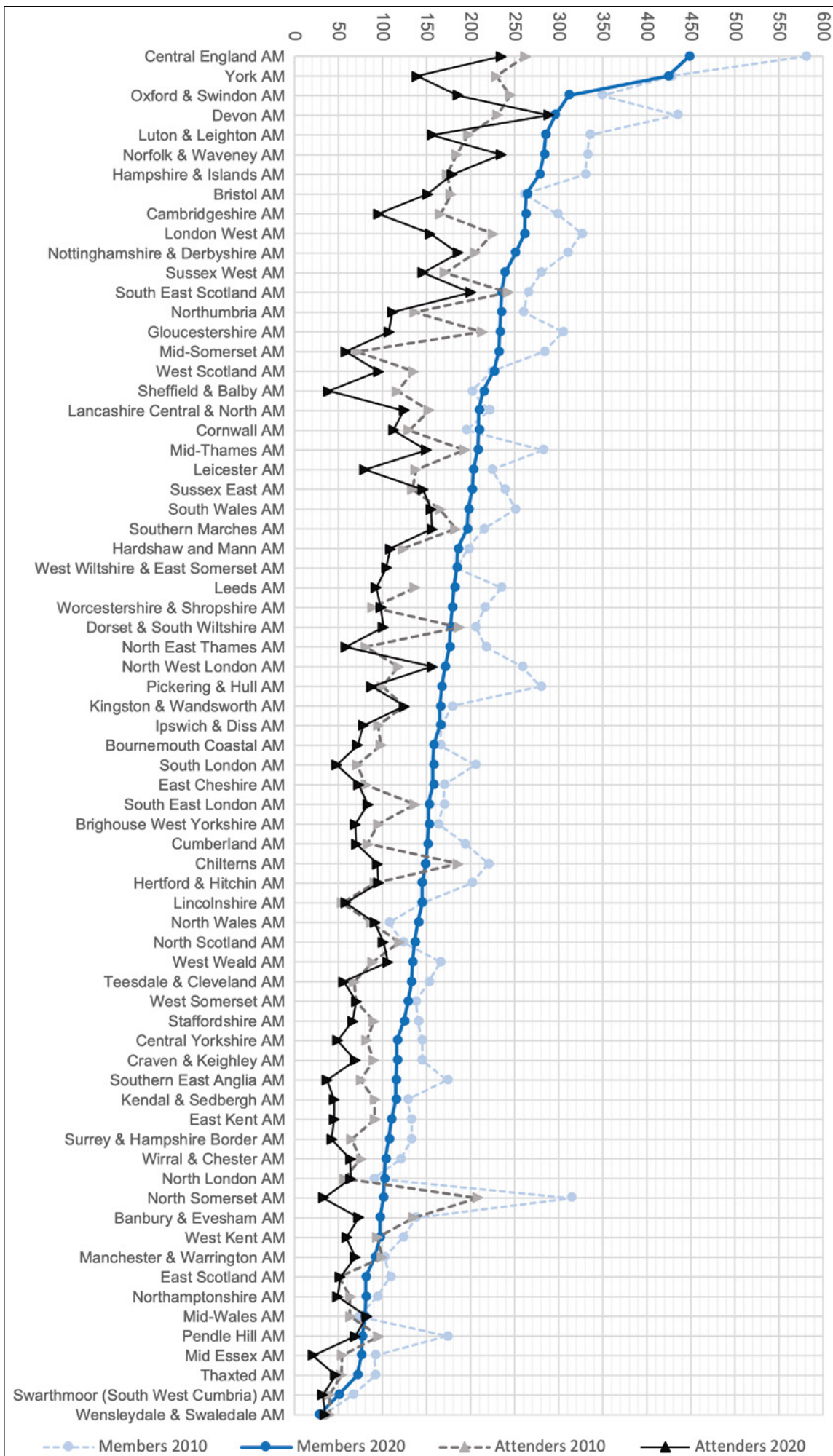


Figure 2. Area Meetings of Britain Yearly Meeting



Quakers share a way of life, not a set of beliefs. Quaker unity is based on shared understanding and a shared practice of silent worship – a communal stillness.

Quakers seek to experience God directly – internally, in relationships with others, and with the world. Local meetings for worship are open to all who wish to attend.

Quakers try to live with honesty and integrity. This means speaking truth to all, including people in positions of power. The Quaker commitment to peace arises from the conviction that love is at the heart of existence and that all human beings are unique and equal.

This leads Quakers to put faith into action by working locally and globally to change the systems that cause injustice and violent conflict.

Britain Yearly Meeting of the Religious Society of Friends (Quakers)
Registered charity number 1127633

Friends House, 173 Euston Road, London, NW1 2BJ

Follow us on social media @BritishQuakers

www.quaker.org.uk